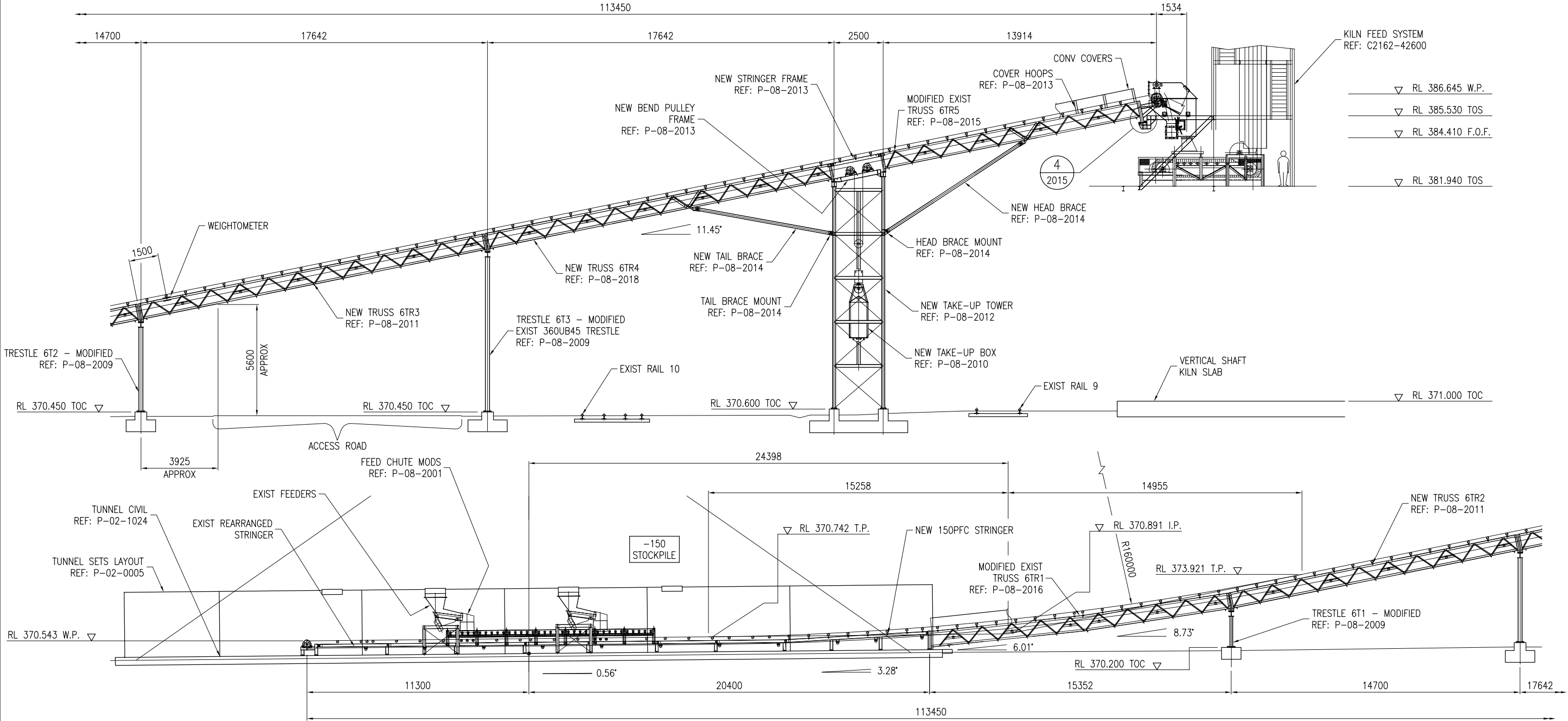


CONVEYOR DESIGN DATA

MISCELLANEOUS	MECHANICAL COMPONENTS	DESCRIPTION	IDLERS	QTY	DESCRIPTION	CONVEYOR OVERVIEW	
PULL WIRE SWITCH BY CLIENT	MOTOR - POWER	18.5 kW	⊕ TROUGH	110	SERIES 15 15105-0750-35	MATERIAL - TYPE	LIMESTONE
UNDER SPEED SWITCH BY CLIENT	SPEED	1465 RPM	⊕ IMPACT	6	SERIES 15 15106-0750-35	- BULK DENSITY	1.6 T/m <sup>3</sup>
-	VOLTAGE	415 V	⊕ RETURN	38	SERIES 15 15161-0750	CAPACITY	70 TPH
HEAD SCRAPER	FRAME SIZE	D180M				LENGTH	113450
PRIMARY -	GEAR BOX - RATIO	20:1				ELEVATION	16102
SECONDARY -	TYPE	FENNER SMSR				SPEED	1.0 m/s
-	SIZE	J20				POWER DEMAND	5.1 kW
BELT PLOUGH	DRIVE - LOCATION	HEAD					
-	PULLEYS (QTY)	1				BELT	
TAKE-UP WEIGHT - 1.47 T (INCLUDING TAKE-UP BOX)	ANGLE OF WRAP	180°	PULLEYS	DIAMETER	WIDTH	SHAFT	BEARING HOUSING
TAKE-UP TRAVEL - 2.3 m	LAGGING	10 THK HERRING BONE	HEAD	∅580	850	∅110	SNH 524 ATST
-	MOTOR DRIVE PULLEY -	∅180 x 3 SPB	TAIL	∅426	850	∅100	SNH 522 TST
WEIGHTOMETER BY OTHERS	DRIVEN PULLEY -	∅400 x 3 SPB	TAKE-UP	∅426	850	∅90	SNH 520 TST
-	DRIVE BELTS -	3 x 2530 SPB				DESIGNATION	PN150/4
						WIDTH	750
						COVER TYPE	GRADE N
						COVER THICKNESS - TOP	6
						- BOTTOM	2



										<p>CLIENT</p> <p>TITLE: PARKESTON PLANT VERTICAL SHAFT KILNS CONVEYOR CV6 GENERAL ARRANGEMENT</p> <p>NUMBER: EXAMPLE 5</p>		
										<p>SCALE: 1:100</p> <p>DRAWN: M.BARONI 11.3.99</p> <p>CHECKED: G.J.L. 18.5.99</p> <p>DESIGNED:</p> <p>APPROVED:</p>		
										<p>GAZ DESIGN DRAFTING</p> <p>104 HANNAN ST PO BOX 4079 KALGOORLIE WA 6430</p> <p>Ph 08 90215349 Fax 08 90216808</p> <p>EMAIL ADDRESS gozdraft@emerge.net.au</p>		
										<p>GAZ DESIGN DRAFTING PTY LTD ABN 18 058 773 916</p> <p>REVISION: A1</p>		
No	REVISION	DATE	BY	No	REVISION	DATE	BY	REFERENCE	DRG No	<p>THE CONCEPTS AND INFORMATION CONTAINED IN THIS DRAWING ARE THE COPYRIGHT OF GAZ DESIGN DRAFTING PTY LTD, AND ARE NOT TO BE USED OR COPIED WITHOUT WRITTEN PERMISSION.</p> <p>A1 SIZE WHEN PLOTTED AT NOMINATED SCALE</p>		